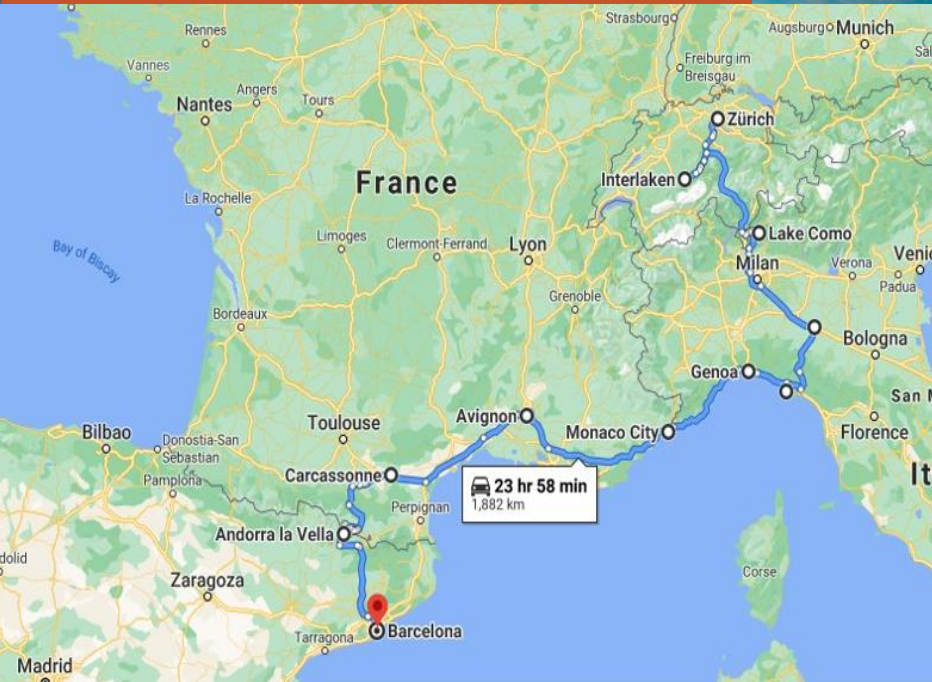


Switzerland to Spain

The Six (Countries) in One Tour

June 19 - 29, 2023



*Note – this trip is not affiliated with Moscow Middle School or the Moscow School District. It is an independent student/parent educational opportunity.

Glad to be back in person and moving forward!



Tonight's meeting requirements

- Mask must be worn at all times
- Sit with your family
 - Social distance when possible

All the information from this meeting
can be found at: globalxpedititions.weebly.com



Switzerland to Spain
(The Six in One Tour)
June 19 - June 29, 2023

Join Matthew Haley and Jason Albrecht, in conjunction with Explorica student travel, on an 11-day trip-of-a-lifetime through Switzerland, Italy, Monaco, France, Andorra and Spain! For more information and complete details please visit us at www.globalxpedititions.weebly.com



“like” us on
facebook

At “Globalxpedititions”



Agenda

- Congratulations!
- So what have we signed up for? Show video
- What is Globalxpeditions (tour Facebook and website)
- Read emails and let us know if your account changes
- Safety
- Roles and Expectations
- Group educational travel 101
- Covid and Travel
- Covid FAQ's
- Who is traveling with us
- Introducing the travel leaders
- Passports
- Special accommodations
- What's included and not included
- Group assignments (reasons & signing up)
- Fundraising (both individual and group)
- Luggage, Phones, Debit Cards
- Holiday gift list
- Future meetings
- Questions and/or concerns
- Traveling parents meeting (5 min)



Congratulations on being selected!!!

Now, let's start getting ready
to travel!

Make sure all student travelers grabbed a poster from us and
Explorica

First, ALL cell phones
off please.



Thank you

**Please Be Sure
Cell Phones
Are Turned Off**

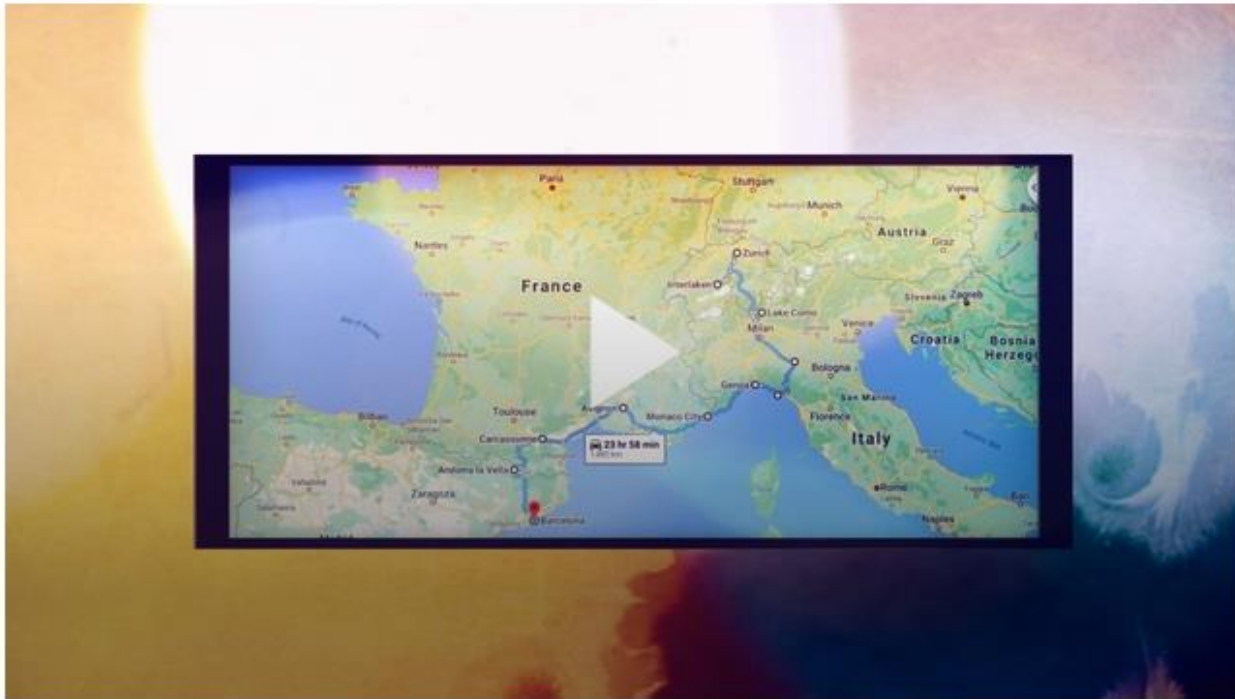


Thank You


Switzerland-Spain 2023 Video

Switzerland to Spain: Six in One Tour

Switzerland to Spain: Six in One Tour



What is Globalxpeditions?



Global Xpeditions

"Expanding your world view through international travel."

All forms and specific information about any trip can be found by clicking the "Trip Destinations" Tab at the left and choosing the appropriate trip.

SOLD OUT

Our 2020 trip has **SOLD OUT**. Thank you for the tremendous interest in middle school travel!

Selected applicants please enroll with Explorica by **3:30 November 30th**. Please see the email from Matthew (Mr. Haley) and follow the directions for enrollment.

Congratulations!

- Home
- About US
- Testimonials
- Photos And Videos
- Frequently Asked Questions
- Trip Destinations
- Contact Us



It is very important to make sure you read all emails that relate to this trip! Please notify us of email address changes as well as any additional emails you would like to add.😊



When emails are sent out, please read them thoroughly and respond promptly (within 48 hrs) when requested.



Safetymatters

- Explorica, State Department, CDC
 - Matthew and Jason don't decide when it is safe to travel ... we have a network of experts.
- We will re-evaluate every trip IF something arises in that area, region, etc.
- Seen it before...Japan and Tsunami, China and North Korea issues, France and train strikes, Turkey and security issues, Covid 19 pandemic.
- More Covid "*What if*" possibilities shared later in this PowerPoint



We're back 😊

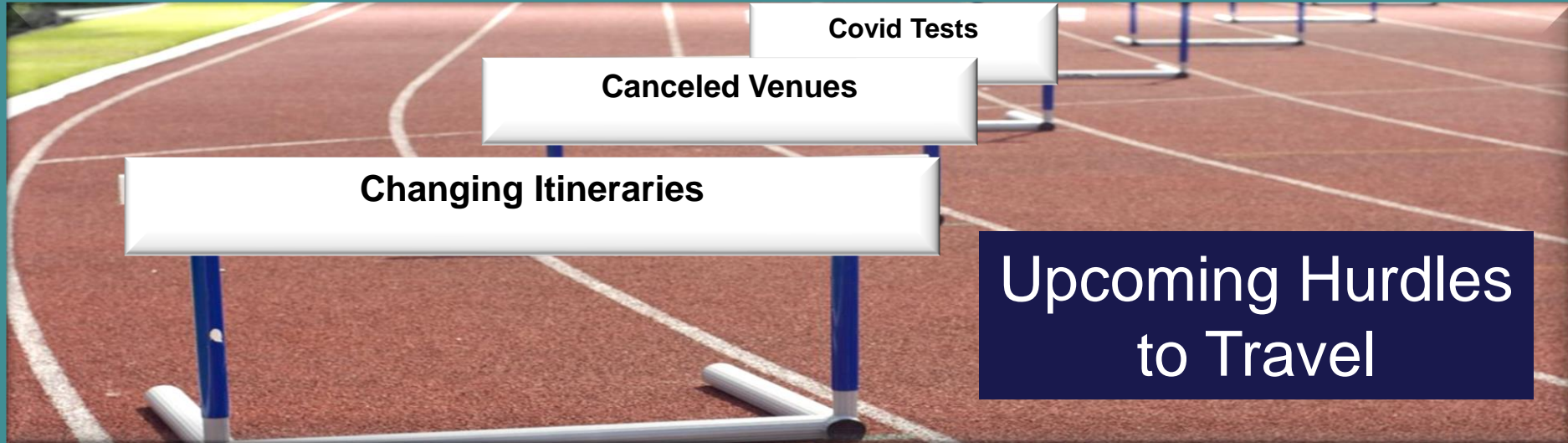
How has Covid changed our trips?



Travel in the age of Covid



- **Flexibility** and **adaptability** are KEY for all international travel
 - Vaccinations (boosters too) are required prior to travel
 - Showing of your Vaccine card will occur daily
 - Negative Covid tests pre, during, and post-tour are MAYBE required
 - Masks, spacing, and traveling/rooming in pods are required
 - Passports are taking longer to get GET THEM BY DEC 2022
 - **Note:** ALL OF THESE MAY CHANGE BEFORE WE TRAVEL ... so be FLEXIBLE



These hurdles are coming, we need to embrace:

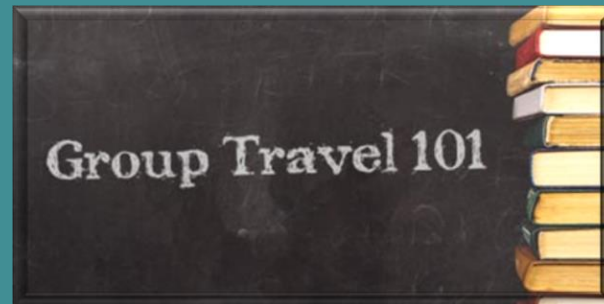
- “Hurry up and wait” - We will have very busy and very slow times ... Be ready
- “Rolling with the punches” - When you are tired, stressed, and annoyed, you need to still be a GREAT teammate!
- “We are in this together! We are a travel family!”
 - Each part/choice/action that a person makes will impact everyone.”
- Remember we are lucky to travel ... Be ready for anything

Traveler Roles and Expectations



Educational Group travel Reminders

- **Flexibility:** Each part/choice/action impacts everyone
- **Patience :** This trip will only work if everyone thinks "We" not "Me" mentality
- **Cooperation:** We are in this together- We are travel family
- **Following the lead of your Tour Leaders:**



Adaptations for Safety



Hygiene

Participants will be provided disposable face masks. Hand sanitizer will be available throughout the program, including on buses and at hotels. Students will be asked a series of questions daily to monitor for COVID-19 symptoms.



Adjusted Itineraries

We're in-the-know with all the museums, performance venues, companies and other sites we visit. We will adjust your schedule to maximize your experiences each day to account for new rules for capacity management, social distancing, masks, and more.



Safety Briefing

All Explorica staff participate in a mandatory COVID-19 training program developed by our Health & Safety Team in consultation with our Medical Director [Dr. Neal Sikka](#). Our staff will assist your group with pre-departure safety briefings for the family as well as a safety briefing upon arrival.



On The Motor Coach

Our motor coach partners have implemented enhanced cleaning and safety protocols. Buses will be disinfected using a variety of techniques, including electrostatic and anti-microbial sprayers, foggers, and steamers. All high-touch surfaces will be wiped down multiple times a day. Air filtration system improvements promote frequent exchange of cabin air, replacing it with fresh air from the outside. We have established seating, loading and unloading procedures designed to limit exposure to other students.



At The Hotel

We work only with hotel partners who are committed to the highest standards in cleanliness. In addition to their already rigorous cleaning protocols, they are now using enhanced cleaning products and increasing the frequency of cleaning in public spaces. Housekeeping spends extra time disinfecting surfaces in guest rooms, focusing on high contact areas. The check-in process has also been modified to limit interaction between students and other guests. Changes have been made to hotel arrival and departure procedures, use of lobby and elevators, and breakfast and other hotel-based activities to promote social distancing. Additionally, we have developed flexible options to support the rooming preferences of individual travelers. For example, if your program pricing is based on quad occupancy, we will offer discounted room upgrades for students who prefer double occupancy.



Meals

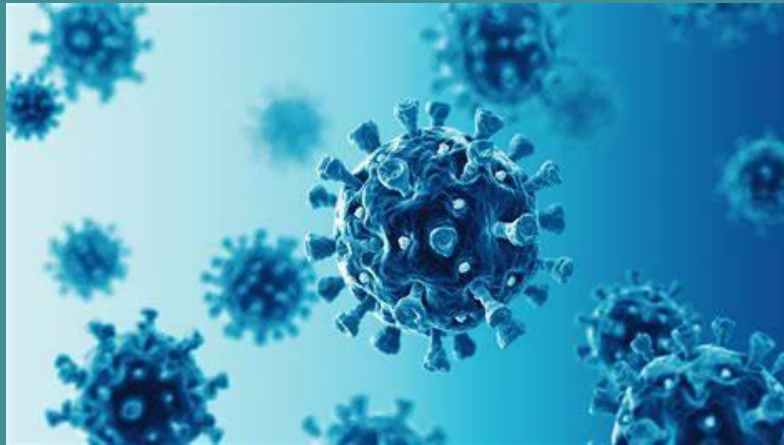
Group meals will be prepared by professionals who adhere to proper food safety and handling protocols, including mask wearing and frequent hand washing. We work closely with each meal vendor to determine the appropriate meal type and group seating configuration, secure outdoor dining where possible, and limit contact with other patrons. Individually packaged food items, grab and go, and plated and served meals may replace traditional self-serve buffet options.

Want to know more specifics?
See your Explorica account

FAQ's

What happens if someone gets covid BEFORE the trip?

- First, before we leave avoid large crowds and unvaccinated people ... do all you can to keep Covid free
- If, however, you do test positive before the trip you will NOT be allowed to join the group and you will need to file an insurance claim to get your money back



Other FAQ's on Covid

- What if our countries cannot be accessed?
 - This MAY lead to a change in itinerary

- Other potential tweaks to be prepared for?
 - If flights are limited our travel date might tweak a bit

- What if...
 - We know there a lots of these ... we are willing to make this trip work if it can be done safely.

2023 Travelers

Group Leaders : 5

Albrecht	Jason	Group Leader
Albrecht	Stacy	Group Leader
Haley	Daniel	Group Leader
Haley	Matthew	Group Leader
Lawrence	Sara	Group Leader

Adults: 12

Lisa	Belknap
Genevieve	Fealy
Miranda	Fenley
Wendy	Goodrich
Lynne	Haley
Cara	Haley
Jessie	Hansen
Jessica	Loftus
Mary	Martin
Lorie	Quist
Holly	Steele
Cody	Williams

Students: 32

2:1 one
student to
adult ratio
32 to 17

Liam	Bacon
Amelia	Barker
Sawyer	Belknap
Baylee	Carpenter
Riley	Edwards
McFarland	Elliana
Brock	Fealy
Ethan	Fenley
Olivia	Goodrich
Max	Gropp
Kenadie	Haley
Phoebe	Haley
Ashley	Hansen
Saskia	Hohenlohe
Haili	Hull
Ella	Julye
Dakoda	Lamebull
Thomas	Lawrence
Lilly	Loftus
Max	Martin
Orion	McClory
Mattea	Nuhn
Nathan	Poler
Adelaide	Quist
Charlie	Roesler
Kiera	Steele
Edie	Sumner
Marcus	Swift
Lydia	Watson
Lilly	Wight
Taylor	Williams
Arlo	Woodland

Introducing the Team

- Trip Leaders
 - Jason Albrecht
 - Matthew Haley
 - Stacy Albrecht (Facebook/Packing Guru)
 - Daniel Haley (Fundraising Coordinator/Group photos)
 - Sara Lawrence (Medical Professional)
- Student Travelers – Trip focus
- Adult Travelers – Supporting role and role models

Passports & Emergency Contact Information



Make sure you have a passport and that it is good up through the end of December 2023 (6 months past the travel dates)

Also...we will have you provide us with an updated medical and contact sheet when we get closer to the travel date



Special Accommodations to Explorica

- **Dietary Needs** — Let us know and we will pass it on to our representative at Explorica
- **Rooming Needs** — Adult Single Room OR Student Twin Room (Call Explorica for Pricing)
- **Medical Issues-** Let us know if there are any medical issues to share at this time.



What is included?

- Round trip airfare from Spokane
- Lodging in Hotels
 - Students: 3 to 4 per room depending on location (students with students)
 - Adults: 2 per room (adults with adults)
- Transportation throughout the trip from MMS back to MMS
- Explorica tour director to guide us on the ground
- Breakfast and dinner daily
- Guided sightseeing/walking tours
- Entrance fees to selected attractions
- Pre-return Covid test





What is not included?

- \$50 for two pre-trip team building activities
- Lunches, beverages, and snacks throughout the day
- Passport fees
- Covid tests as needed
- Souvenirs
- Additional airline baggage fees
- Phone calls and Wi-Fi Access
- We recommend \$700 for additional expenses on tour



Group Sign-ups



49 Travelers

Jason
&
Stacy
22

Planes

Matt
&
Daniel
23

Jason
11

Stacy
11

Daniel
12

Matt
11

Counting, Travel Sites, Etc.

Hotel Groupings ... 1,2,3,4, or 5 ??

Why: Needed for times when 49 people can't all be at the same place or on the same plane.

How: We will be asking for your suggestions and will set groups based on that and group necessities ... (parent/kid groupings and division of boys and girls to assist with later rooming assignments).

Travel Group Preferences

- Please write down three people that you would enjoy traveling with while abroad
- We will do our best to honor these requests but WILL NOT guarantee anything
- While abroad ... BE FLEXIBLE!
- All adults will group with their child

I, (Print your first and last name) _____, would like to travel with the following three people; they are listed below in order of preference.

(Note: Please do not feel like you need to preference three people or anyone at all. Three is the maximum amount of people you can preference, but there is no minimum. If you do not have a preference, please check the box at the bottom that indicates that and we will automatically place you in a group).

- 1) _____
- 2) _____
- 3) _____

I do not have a group preference!



Fundraising



- We are committed to helping you meet your fundraising goals!
 - Four full-group fundraisers (earn your spending \$\$\$)
 - You keep what you earn
 - We support Local NW companies
 - Money raised can be used to pay your balance or can be saved for your spending cash
 - Disclaimer: *Donations are NOT tax deductible*

1) Valentine's Day sale
Moscow Candy Co.



2) Mother's day fundraiser
Orchard Farms Soaps



3) Fall Coffee Fundraiser



4) Holiday wreath sale



Tis the season for FUNDRAISING:)

Holiday Fundraising Tips from Daniel!

- Remember you also need spending cash (\$700 suggested)
- Consider a thank you email and a last chance to donate email
- HOLIDAY LETTER 😊



Dear [relative, neighbor, friend, etc.],

As you may already be aware I'm headed to [country/ies] in June of [tour year] as part of an educational overseas tour!! The trip is being organized in collaboration with an internationally renowned program called *Explorica* tours whose motto is "Travel. Learn" In order to earn my way overseas I have already begun both group and individual fundraising efforts such as [various ways you are fundraising—i.e., weekend carwashes, neighborhood yard work, etc.] and have set myself a personal goal of raising [___%] of the trip's total cost. That's where you can help😊

This year, rather than giving me a well-chosen holiday present I would ask that you consider making a monetary contribution to my [country/ies] travel fund instead. All

[Closing—i.e., Sincerely, Regards, Love, etc.],

[Signature]

[Name]



Why wait?

Individual and/or small-group fundraisers

- Shovel today to pay your way!
 - Business card templates available on our website <http://globalxpeditions.weebly.com>
- Small-group fundraisers
 - Chance to work with your friends (shared motivation!)
 - Be creative. Sell to your strengths!
 - Find tips and suggested fundraisers at our website
- Holiday fundraising letter
 - Request the gift of adventure abroad
 - Template available at our website 😊
- Your Donation Page...



[Home](#) > [Teachers](#) > [Making travel more accessible](#) > [Fundraising](#) > [Personal fundraising page](#)

Personal fundraising page

Every paying trip participant receives their very own fundraising page on [explorica.com](#), and the page is generated automatically upon enrollment. Participants can personalize their page, or just use the provided default content, and begin accepting donations immediately. Here's a quick overview of how it works:

Accessing your fundraising page

As soon as a paying participant enrolls, they can access their personal fundraising page by logging in to their Tour Center and clicking on the "Go to my fundraising page" link in the "Tour Account" module:

▼ **TOUR ACCOUNT** [make a payment](#) > [terms & conditions](#) >

Remaining Balance: \$1,601.25

Payment Plan: Monthly automated plan (checking account)

Amount Paid: \$362.75

Last Payment Made: Aug 5, 2016

Next Payment Due: Sep 5, 2016

[details](#) >

[Go to my fundraising page](#) >

**MAKING TRAVEL MORE
ACCESSIBLE**

fundraising

personal fundraising page

NEW

Using your Explorica Fundraising Page

Help Send Emily to Costa Rica

[Edit Profile >](#)



Hi! I'm going on the adventure of a lifetime with my school. I'm asking for your support to help fund my trip! This tour to Costa Rica will build on the things I'm learning about in my Spanish class, while introducing me to an exciting new destination and culture. Please consider supporting my trip with a donation of any amount. Thank you!

RAISED \$500 of \$1,000 goal 597 days left

50% Completed

Share by:



[Submit donation](#)

Learn more about my Explorica Tour



Tour: Costa Rica
Spring 2018

[▶ TOUR ITINERARY](#) [print itinerary >](#)

[▶ TOUR INCLUDES](#)

Supporters (4)

\$150 5/10/2018	from Jennifer Reynolds I'm so excited for you, I love Costa Rica! You're going to have a great time!
\$200 5/10/2018	from Lucille Fitzgerald Make memories and take lots of photos for me! Love, Nana
\$50 5/10/2018	from Anonymous
\$100 5/10/2018	from Timothy McKinley Have fun on your trip! Love, Uncle Tim

Follow the online directions and forward this to friends and family to have them help You reach your travel goals!



Luggage, Cell Phones, and Debit Cards

A debit card from your bank works best.

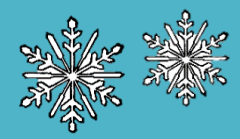


Pack LIGHT! You will be carrying this around.

Feel free to check out other options!



International phones or phone cards



Holiday Gifts for your Adventurer

- ✓ Money belt
- ✓ Travel wallet with a zipper pouch
- ✓ Carry on luggage (22"-14"-9")
- ✓ Book about our destination
- ✓ Adaptor pack & voltage converters
- ✓ Reusable TSA approved toiletries bag
- ✓ Tri-State or similar gift card
- ✓ "Non smart" watch
- ✓ Light weight and easy dry clothes
- ✓ Scarf for cover up
- ✓ Portable charger
- ✓ Ear buds/headphones
- ✓ Neck pillow/ eye mask
- ✓ Reusable water bottle
- ✓ Travel journal
- ✓ Travel toiletries kit



Switzerland-Spain 2023– Schedule of meetings/events

- Dec. 13, 2021 1st meeting after signing up info about fundraiser #1
- March 28, 2022 2nd Meeting, Collect \$50 team building fee and info on fundraiser #2
- Sept. 10, 2022 Saturday Team building day #1 / fall fundraisers (9am-1pm at TBD location)
- Dec. 5, 2022 Culture Night & final rooming preferences, roles/expectations, etc. @ 7pm in the MPR
- March 6, 2023 History and travel logistics @ 7pm in the MPR
- May 8, 2023 Pre-travel information @ 7pm in the MPR
- May 20, 2023 Saturday Team Building Day #2 (pre-trip) 9am-3pm at TBD location)
- June 18, 2023 Night before departure meeting. Time TBD
- June 19-29, 2023 Our adventure is on!

All meetings and times are subject to change and you will be notified of any changes in advance. Please remember that all travel participants, including traveling adults, are required to attend at least 85% of all team meetings.

Questions, Comments, and/or Freaking Outs

5 minute adult travelers meeting
when we finish



Like us on
facebook



All this info can be found at
www.globalxpeditions.weebly.com